

**RESERVOIR LOFTS  
CONDOMINIUMS**  
29, 31 WHEELER STREET  
CAMBRIDGE, MASSACHUSETTS

ARCHITECT  
**T K G**  
**KHALSA DESIGN INC.**  
17 IVALOO ST., SUITE 400, SOMERVILLE, MA 02143  
TEL: 617-591-8682 FAX: 617-591-2086

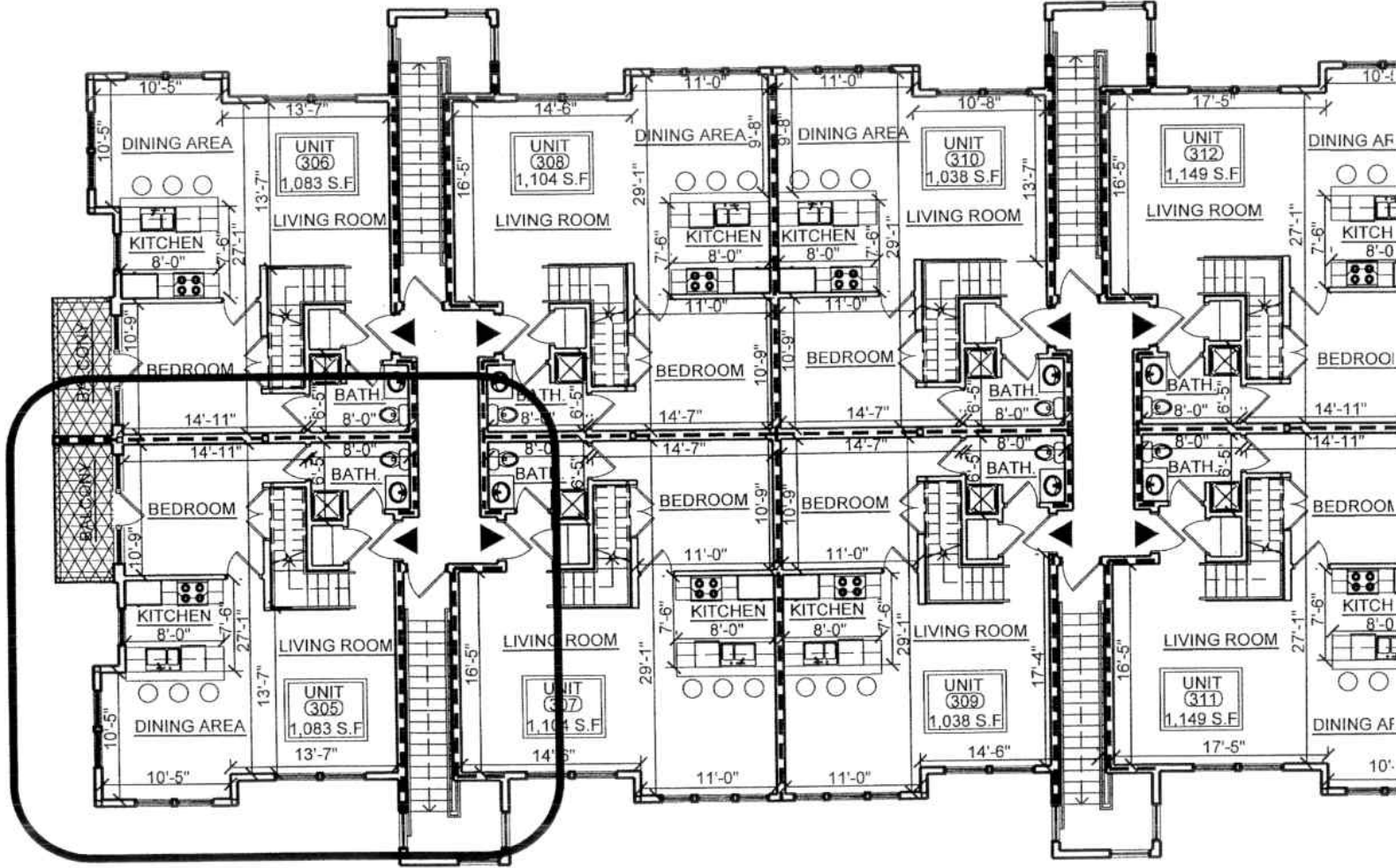
**Certification:**  
I Certify that this plan fully and accurately depicts 29 Wheeler Street, Cambridge, MA Unit # 305, its immediately adjoining units, its layout, location, dimensions, approximate area, main entrance and immediate common area to which it has access, as built. This plan has been prepared in conformity with the Rules and Regulations of the Middlesex South District registry of deeds and of Commonwealth of Massachusetts  
**JAI SINGH KHALSA, NCARB,**  
ARCHITECT, MA NO. 6042

Registration:

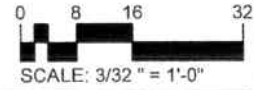
- Legend:**
- COMMON AREA
  - EXCLUSIVE USE
  - DEMISING WALL
  - ENTRY
  - INTERIOR WALLS

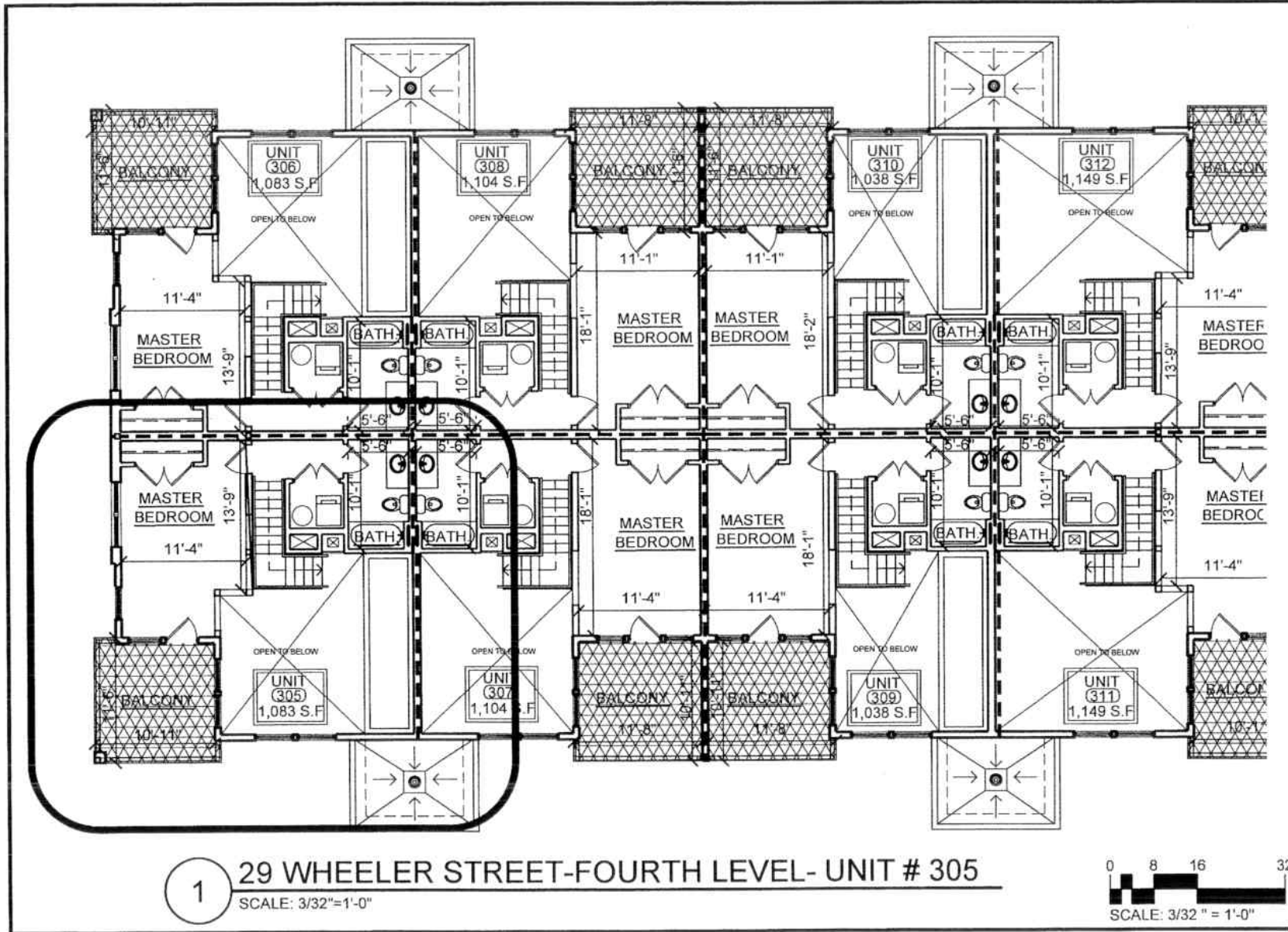
**UNIT PLAN**  
**29 WHEELER ST**  
**UNIT # 305**

Scale: 3/32"=1'-0" Date: 1-20-2008



**1** 29 WHEELER STREET-THIRD LEVEL- UNIT # 305  
SCALE: 3/32"=1'-0"



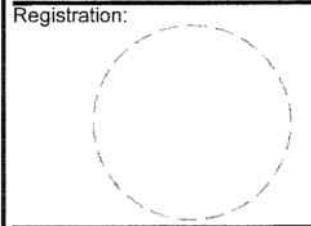


**RESERVOIR LOFTS  
CONDOMINIUMS  
29, 31 WHEELER STREET  
CAMBRIDGE, MASSACHUSETTS**

ARCHITECT  
**T K G**  
**KHALSA DESIGN INC.**  
17 WALDO ST., SUITE 400, SOMERVILLE, MA 02143  
TEL: 617-591-8682 FAX: 617-591-2086

Certification:  
I Certify that this plan fully and accurately depicts 29 Wheeler Street, Cambridge, MA Unit # 305, its immediately adjoining units, its layout, location, dimensions, approximate area, main entrance and immediate common area to which it has access, as built. This plan has been prepared in conformity with the Rules and Regulations of the Middlesex South District registry of deeds and of Commonwealth of Massachusetts

JAI SINGH KHALSA, NCARB,  
ARCHITECT, MA NO. 6042



- Legend:
- COMMON AREA
  - EXCLUSIVE USE
  - DEMISING WALL
  - ENTRY
  - INTERIOR WALLS

**UNIT PLAN**  
**29 WHEELER ST**  
**UNIT # 305-1**  
Scale: 3/32" = 1'-0" Date: 1-20-2008